

Specs:

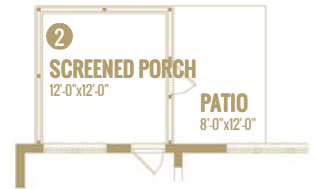
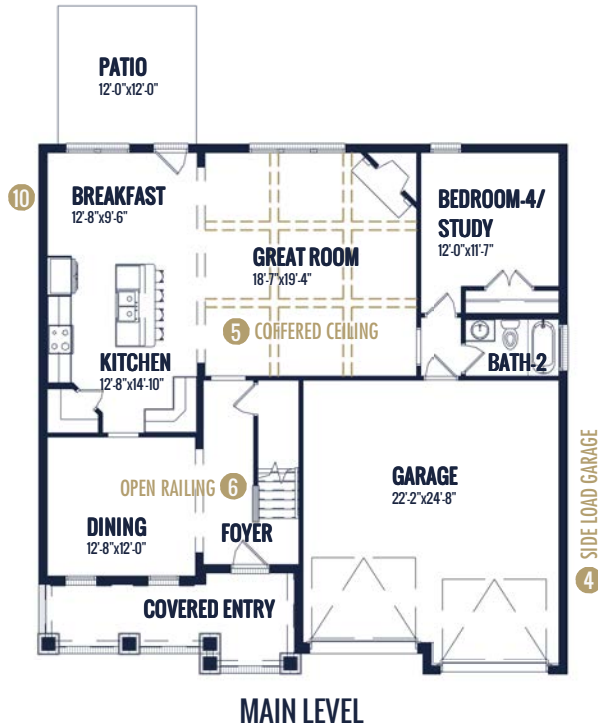
Bedrooms:	4
Bathrooms:	3
Square Footage:	3,128 Sq.Ft.
First Level:	1,334 Sq.Ft.
Second Level:	1,794 Sq.Ft.
Width:	45'-10"
Depth:	45'-11"

Options Shown:

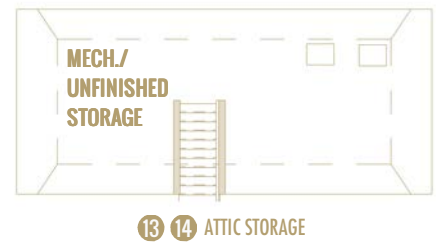
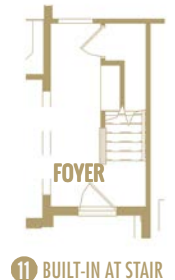
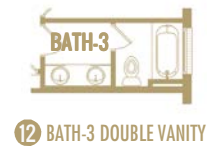
- | | |
|-----------------------------|------------------------------------|
| 1 Covered Porch | 9 Bonus Room Closet |
| 2 Screened in Porch | 10 Side View Window |
| 3 Sunroom (Adds 144 Sq.Ft.) | 11 Built-In at Stair |
| 4 Side Load Garage | 12 Bath-3 Double Vanity |
| 5 Coffered Ceiling | 13 Attic Storage From Owners Suite |
| 6 Open Railing-Main Level | 14 Attic Storage From Hall |
| 7 Open Railing-Upper Level | |
| 8 Owners Suite Tray Ceiling | |

Watercolors, illustrations, and floor plans are for marketing purposes only and are subject to change at builder's discretion. Square footage is outside veneer and should be independently verified. This is not a legal document.
7/13/2023 9:41:40 AM

FLOOR PLAN: HUNTINGTON TRANSITIONAL



4 SIDE LOAD GARAGE



Watercolors, illustrations, and floor plans are for marketing purposes only and are subject to change at builder's discretion. Square footage is outside veneer and should be independently verified. This is not a legal document.
7/13/2023 9:41:42 AM